

GLASS CANOPY SDL ACUBIS



GLASS CANOPY SDL ACUBIS



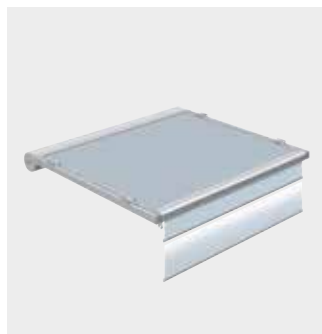
1

HIGH-QUALITY FLAT ROOF CONSTRUCTION

With a roof pitch of only 2°, the roof system can be used as either a free-standing construction, or as part of the house architecture.

**2****WALL JOINT WITH CABLE DUCT**

The one-piece wall joint can be fitted with a built-in cable duct. Control components for lighting and shading are also installed in the cable duct.

**3****COORDINATED SHADING SOLUTION**

A convenient and optimal solution from a single source: as well as an under-roof awning, it is also possible to install vertical shading.

**4****INTERNAL BEAMS**

The internal beams can be strengthened by inserting steel reinforcements to enable even greater bearing scope. Built-in lighting with concealed cable routing is also possible.

**5****INNOVATIVE POSTS**

The position of the posts is variable, and the post profiles enable you to connect vertical systems to the canopy. The length of the posts is made to measure, and is available with optional height adjustment.

**6****SLIM FACIA**

A slim, all-round facia of only 253 mm ensures an exceptionally sleek and lightweight design to meet even the most exacting requirements.

GLASS CANOPY

SDL ACUBIS

System description

The Solarlux SDL Acubis glass canopy system is a non-insulated aluminium profile with internal structural reinforcements. The profile, which has been specially designed for this application, is used to achieve filigree constructions. It is suitable for use in open, partially closed and closed glass canopies, and also in non-insulated glass houses.

DESIGN FEATURES

Several different versions of the system are available to choose from:

- Lean-to and double pitch roof drainage via gutter
Concealed drainage or emergency drainage can be installed in the posts
- Can be set up as a free-standing construction or integrated into the existing house architecture using a wall joint
- The single-piece wall junction enables simple installation
- The roof members are directly bolted to the wall junction
- The canopy is always constructed with a pitch of 2°
- Three-sided or four-sided all-round fascia with a height of just 253 mm, depending on the design
- The design provides for single glazing with laminated safety glass in thickness of 8, 10 and 12 mm
- The gently curved, powder-coated Solarlux aluminium system profiles create an aesthetic unity. The design is elegant and timeless
- The wide range of available profiles enables a choice appropriate to the property in respect of size and structural requirements. Reinforcing steel can be inserted into the cavities of the structural profiles. This allows for large roof structures and maximum openings and spans
- The supports can be set back from the eaves end thereby providing best structural use of the sections. The positioning of the posts is variable
- The glass canopy can be lit elegantly using spotlights built into the roof beams. The cables are concealed in a cable duct located in the wall joint
- The system is also available with an optional under-roof awning and vertical shading

SERVICE FEATURES

For design and estimating during the planning stage, tables with structural design data for preliminary design work are available. Structural calculations for the system chosen for the property under consideration can be produced at short notice.

- The dimensions for the glass are supplied with the order confirmation if the glass canopy has been specified for subsequent glazing
- With the glass canopy being delivered pre-fabricated and partly pre-assembled, it means that installation times are considerably reduced
- The roofing system does not require siliconing
- Preferred upright units for the glass canopy are: SOLARLUX SL 20e, SL 25, SL 25R, SL 25 XXL, SL 35 and SL 45