



The looking glass

A GLIMPSE THROUGH THE WINDOW AT PENINSULA

NEWSLETTER / SPRING

EDITION - 2018



Inside this edition

- 2 Ken's Welcome
- 3 Company vision
- 4 Installation facts
- 5 Installation of the month
- 6-7 Upcoming projects
- 8-9 New products
- 10 Competition
- 11 Staff news

| SEE INSIDE

www.peninsulawindows.co.uk



Ken's Welcome

Welcome to the first edition of "The Looking Glass", our quarterly newsletter which will keep you updated on our latest news and installations, company developments and new products.

I want to start with a thank you to you all for your positive attitudes since the presentation. The results of the first quarter on the whole are very encouraging, and I am really excited about the future and our growth plans for the company, including a move into Chester which is happening as I write! Our continued success offers everyone opportunities to develop themselves as well as their roles within the business and I know that many of you found the recent one-to-ones very helpful. They have shown areas where support for personal development is required and we will be working with you on these during the next few months, but it is a continual process so do let us know if you have any other areas you feel we can help.

As we strive to meet our goals and objectives it is important that we all remain committed to our Vision Statements – please take these on board as it is your passion, commitment and dedication to your job and to the company that will enable us to succeed.



This is very much your newsletter though so please do let me have your feedback on this issue and any thoughts on what you would like to see in future issues.

Ken Grayson

CEO - PENINSULA

Company Vision

Moving Peninsula to another level



"To profitably double our turnover in two years, whilst leading the way as the very best provider of home improvement solutions in Wales and the North West"

"Being the best company to work for, to buy from and to sell to, who is seen as a fully committed supporter of the community in which we operate."



Installation Facts

It's been a busy first quarter and to put it all into perspective, we thought it would be interesting to see how the installations we've been working on tot up when we breakdown the stats:

NEWSLETTER / SPRING
EDITION - 2018

203

WINDOWS

63

DOORS

7

CONSERVATORIES

4

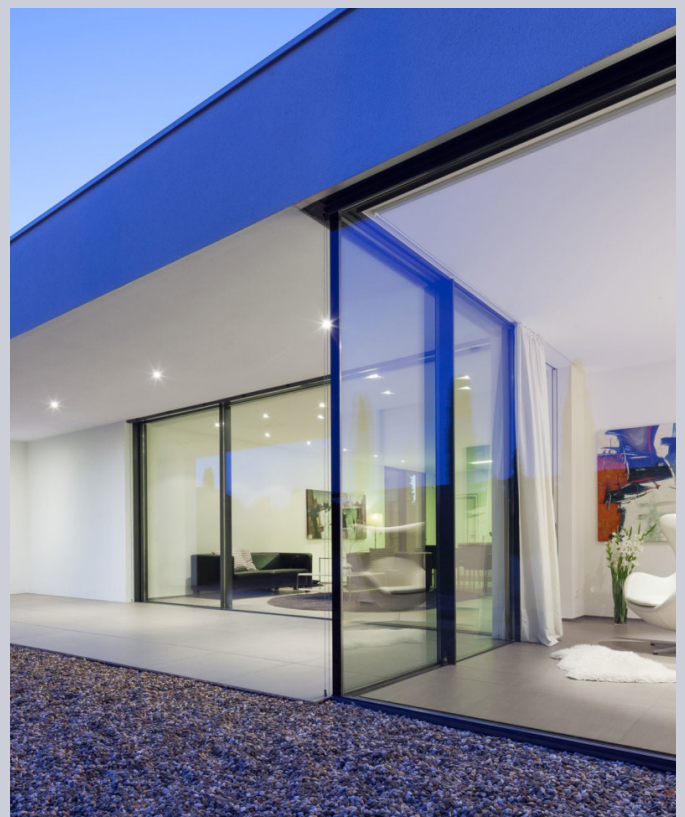
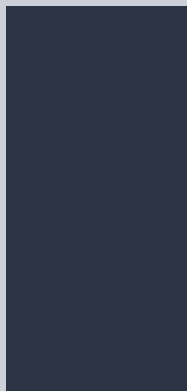
BALCONIES

3

GARDEN ROOMS
AND WINTER
GARDENS

1

ROOFLINE
JOB



Installation

of the month



Sympathetic Stone-clad Orangerie

Our chosen Installation of the Month is a Stone-clad Orangerie that was fitted by Martin and Dave with builders Dion and Paul, who did the basework. An Orangerie adds a new dimension to a home and provides a seamless link between your house and garden, and as the building stones in Wales are varied and reflect the diverse geology of the country, we're always mindful of ensuring that any installation works with, not against its surroundings.

This Orangerie is sympathetic to the house and we were at great pains to source similar stone cladding so the end result is that it blends into the home. We fitted Residence 9 Casement Windows which are traditional looking, along with Welsh Slate sills on the interior and exterior. We also fitted a roof lantern to flood this new sitting room with natural light.

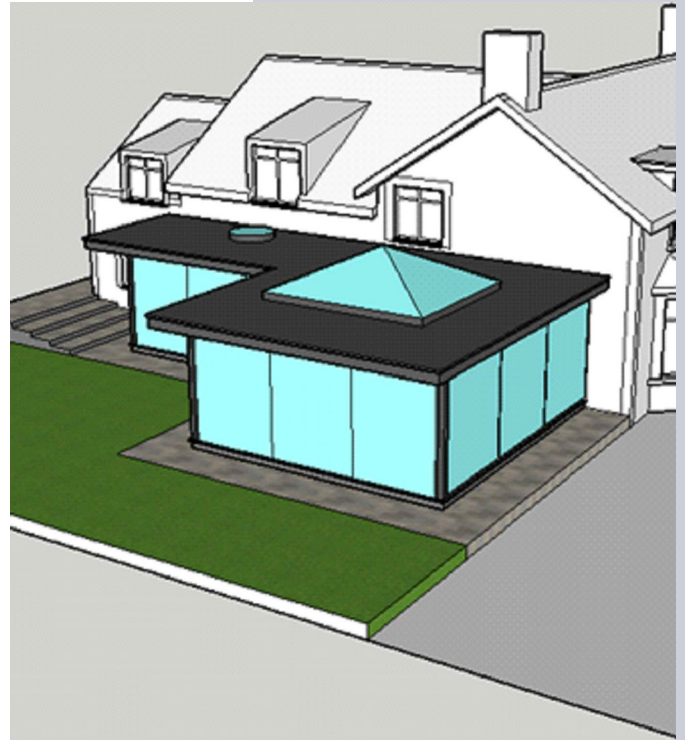
Upcoming project

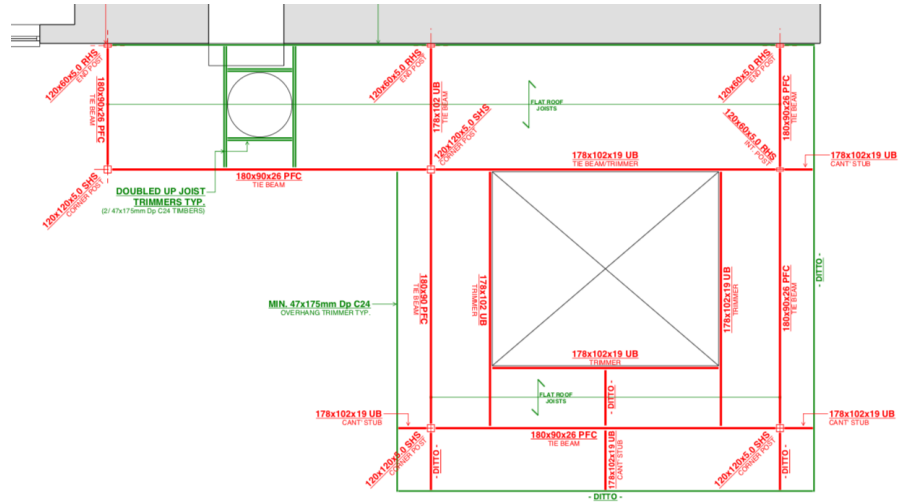
We're currently in the planning phases of installing a new Aluminium Conservatory for one of our clients with hopefully an imminent start date.

The request was for a clean, modern living space that could be used all year round with minimal framing.

Our solution is to use sliding glass walls with very narrow interlockers where the frames meet of only 30mm, and the steel structure holding the frame up will be largely hidden within the glazing and the roof. It will also incorporate a circular rooflight as well as an aluminium (Atlas) roof which has very narrow sightlines in the rafters and ridge.

We're very excited about this project as the end result will meet all our clients' requests in a sleek and elegant design that compliments and respects the design and structure of their home.





New products

Designer Awnings

As Glass Rooms, Conservatories and Glass Canopies continue to grow in popularity we are delighted to announce that we're now able to offer designer awnings from Markilux which can be installed either on top of or below a glass roof to offer effective climate control. Not only are these awnings wind and weather reliable but they're also self-cleaning, and with a choice of models and over 250 cover patterns you can't fail to be inspired!



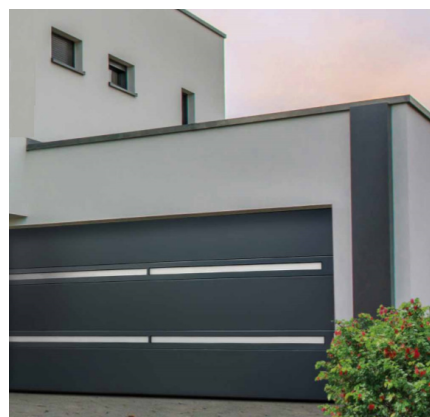
The SDL Acubis Flat Canopy

The latest glass canopy development from Solarlux is the new SDL Acubis flat canopy which is a winner in terms of design as it is barely visible to the eye and functionality, making it the perfect solution for any building, especially for free-standing cubic structures.



Gwynedd Garage Doors

Gwynedd Garage Doors has a new partnership with a supplier that produces a combination of Slick panels and narrow glazed aluminium sections to give garage doors a very special look. This new Slim Line range offers various glazing types with a varying window height from 5 to 10cm. They can also be glazed with LED striplights to make the door stand out at night. And if that's not enough, they can also do custom designs on its new range of sectional garage doors.



Quick to fit, strong and warm, the new Solid Roof

Sash UK has launched Celsius Solid Roof, an innovative tiled roof system for conservatory retro-fits. It's constructed using highly insulated panels which are manufactured to precisely meet project requirements and come supplied in kit form for convenient assemble on site. It's also designed to be fast to fit which makes the roof weather-tight in just a few hours.



Fron Goch Collaboration

In March we unveiled a Garden Room at Fron Goch Garden Centre, Caernarfon. This collaboration is the first installation for us outside of our showroom and as a like-minded family run business that shares the same values and ethos of high levels of service and quality products it was a natural fit not just for us but also for our customers. The Garden Room has a bespoke glass canopy with sliding glass doors and has been designed to extend living space while offering homeowners the enjoyment of outdoor living long past summer. If you're in the area why not go and have a look.





Competition

Win Dinner for Two at The Marram Grass

This is your chance to show off a project or even a number of projects you are particularly proud of. Simply send us some photographs of the installation – they can be straight product photos in situ or you can get creative and be a bit more design focussed. All we ask is that they're of high quality that can be used not only to feature in the next newsletter but also for brochures, on our website and for social media.

Send your photos with an outline of why you've chosen the installation to Sam at the office at sam@peninsulawindows.co.uk by Friday 29 June and we'll select the best photo which will win the photographer dinner for two at the highly acclaimed and award winning Marram Grass restaurant.

Staff News

Andy Hutchinson



Ioan Jones and Gareth Pickstock



Tony Parry



The Movers & Shakers:

Ashley Bowen-Jones – After Sales Manager

Ashley's new role is in developing the After Sales Care side of the business.

Gareth Pickstock – Installation Manager

Congratulations to Gareth on his promotion to the permanent position of Installation Manager – testament to the good job he was doing as Interim Manager.

Tony Parry & Andy Hutchinson – Fitters

Tony is a very experienced fitter who will be teaching all he knows to Andy as they grow our business with installations down the North Wales coast. They both joined us on 5 March and are based in St Asaph.

Ioan Jones – Joiner

Anglesey born and bred, Ioan joined us on 12 March. He has been a joiner for 10 years but has spent many of those working away so he's pleased to be back working on the island full time.

Kim Pinkerton – Marketing Assistant

Kim joined us in mid March and her role is very customer focused and aside from generating new business leads she will also be involved in planning permissions.

Ben Jones – Sales Representative

Ben is new to sales so he's just completed his training having joined us in mid March and we've already received some great feedback on him from our customers.

Ben Jackson – Admin Assistant

Ben is as the title suggests helping out in the office, contacting our customers for installation and fitter feedback as well as generating new sales leads.

Andy Fullman – Sales Representative

Andy has a sales background in technology and is out and about on the road generating new sales for us.

Leanne Miller-Bowles & Tamsyn Wilkinson – Regional Directors

Leanne and Tamsyn have been taken on to develop our move into Chester and future growth into Cheshire and further afield in the North West. Leanne has project management experience while Tamsyn is already known as our favourite South African! We'll tell you more about them in the next issue.

Sponsorship

We are committed to playing an active role in the local community and as such invest heavily in and support groups through sponsorship and charitable donations. Here's a round-up of our recent support:

Beaumaris Town Band

Beaumaris Band's Youth Band is representing not only the Island but also Wales in the European Brass Band Championships (EBBC) in Utrecht, Netherlands on Sunday 6 May 2018. This is the world's most prestigious brass band competition and a massive achievement for them to get through to these championships and we're delighted to be supporting them in funding their travel costs for the 49 band members and their instruments to the Netherlands.



Running for Fun in Llandegfan

We're delighted to be supporting the Llandegfan Fun Run again for the second year. The annual 5k charity run will take place on Wednesday 6 June with all money raised from the event going to the local school, Ysgol Llandegfan, Gwynedd and Anglesey Hospice at Home and Gafael Llaw which supports children and young people from the Gwynedd and Anglesey area suffering from cancer.



Rugby

We're kit sponsors of Bangor Rugby U11s team for their away games and have also provided the parents with an event tent so they can keep warm and dry while they cheer on the boys during the winter months!



Football

Our logo is now emblazoned on the strips of Bro Goronwy FC, Pen Phoenix and Amlwch Town Juniors U16s football teams as we've signed up to be kit sponsors.

Bro Goronwy FC is the local football Club covering Moelfre and Benllech, and the First Team which is ranked 4th in the Gwynedd League is proudly sporting our logo on their kit.

Based in Penmaenmawr, **Pen Phoenix** are currently mid table which we're blaming on our builder, Dion who hasn't been in front of the net as goalie for a couple of months as he's been busy moving house!

Amlwch Town Juniors won the league last season and with new players on board this season they're now the youngest team playing against teams with boys a year older so they are doing really well to be holding their own and it's looking promising for next season.



**Call now on
01248 715 555**
or visit our
showroom

Star Crossroads, Gaerwen,
Anglesey, LL60 6AL