



The looking glass

A GLIMPSE THROUGH THE WINDOW AT PENINSULA

NEWSLETTER / WINTER

EDITION - 2019



Inside this edition

- 2** Dylan's Round-up
- 3-5** Company Updates
- 5** Celebrating 35 years
- 6-8** Installations of the Month
- 9-10** Upcoming Projects
- 11** New Product
- 11** Staff news

| SEE INSIDE

www.peninsulawindows.co.uk



Dylan's Round-up

Well 2018 went quickly and as we hurtle into 2019, I thought this was a good time to take stock and reflect back on last year's business achievements and importantly look to the future.

Our target for 2018 was an ambitious £3,000,000 in nett sales turnover, and I'm delighted that we achieved it through a good and balanced mix of all our products.

Although we have set ourselves a target of £3,600,000 for this year, it is more about consolidation. The last 12 months has been an interesting journey as the 50% increase in turnover has had a big impact on the business. There have been extra costs with the need to have new staff, new vans and new computers but the infrastructure is now in place and we're ready for continued organic growth.

2019 is looking good already and we have a busy and healthy schedule for the next few months which we need to maintain. The aim is to continue wowing customers with our creative and often bespoke designs while maintaining the business on our core products. We will also continue to develop our presence in the North West and have some exciting projects coming up which you can read about in this issue.

My thanks have to go to every member of the Peninsula team for their hard work and continued support. This teamwork is vital and whatever your role within the company you are instrumental in our success.



I wish you a healthy
and happy 2019

Dylan Hulse

DYLAN HULSE
MANAGING DIRECTOR



Company Updates

It's a Win Win!



We are delighted to have won not one but TWO of CV Magazine's UK Excellence Awards for 2018.

Corporate Vision Magazine provides discerning readers worldwide with a wealth of news, features and comment on the corporate issues of the day, and its prestigious UK Excellence Awards seeks to acknowledge the very best from across the UK's vibrant and ever-evolving business market.

The two awards we scooped were -

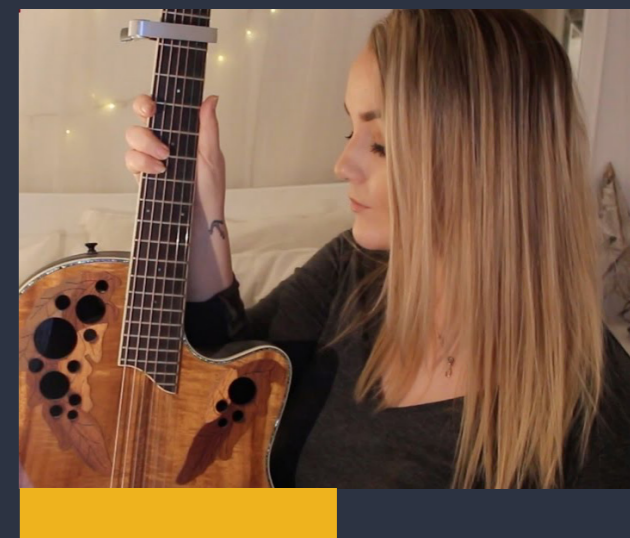
- 🏆 **Best Customer-focused Window Glazing Company in North Wales**
- 🏆 **Window Glazing Specialists of the Year**

Festive Party

We were delighted to welcome customers to our showroom for a drop in, eat, drink and sing some festive songs at our Christmas Event on Wednesday 19 December.

Talented Anglesey singer, Beth Frazer sang her personal favourites and Christmas Carols which was enjoyed by all and accompanied by many who were all in fine voice! We had excellent wines to taste from Holyhead based James Fearon Wines who also had specially selected discounted wines to be purchased for Christmas.

The evening was an overwhelming success so thank you to everyone who came along.



Tyddyn Sachau Update



In our last newsletter we mentioned that we were installing a Glass House at Tyddyn Sachau and we're delighted to show you the end result.

We are also working with Tyddyn Sachau on raising invaluable funds for the Wales Air Ambulance throughout 2019. The registered charity costs £6.5 million every year to provide its lifesaving service so for every appointment made with us at Tyddyn Sachau we will donate £10 and you'll also benefit with a £10 voucher to spend at the Garden Centre.



peninsula
improving homes since 1984

Loyalty Card

We value your loyalty

If you haven't got your Peninsula Loyalty Card then you are missing out on valuable Loyalty Points that you can use to renovate your home.

There are plenty of easy ways you can earn these points including simply referring us to a friend or leaving a positive review on Google or Facebook.

Call in next time you are passing to pick up your card or call us and we'll post one out to you.

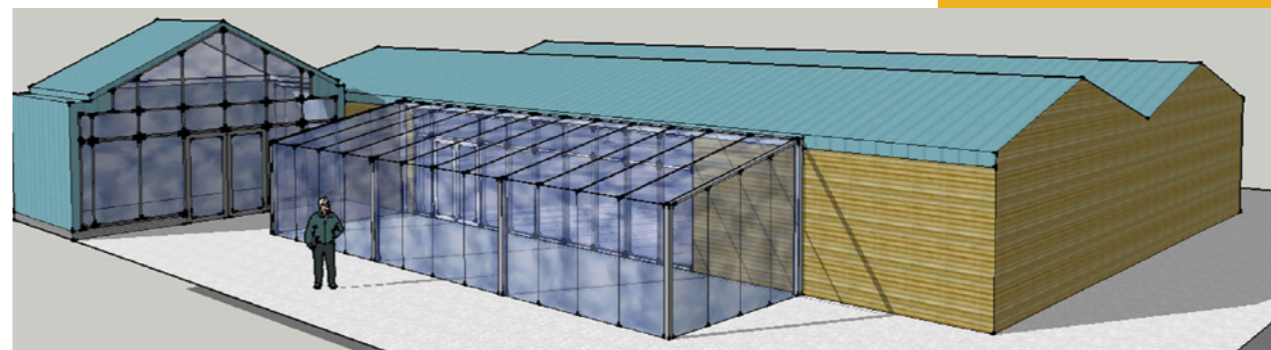


Fron Goch Garden Centre's Restaurant Extension

Building on the success of our Garden Room collaboration with Fron Goch Garden Centre, we are now in the process of working with them on an extension for their award winning Restaurant.

We've designed a single-glazed cover to go over the outdoor patio area which will be used for the restaurant as well as a showcase for Fron Goch's Outdoor Living department and product demonstrations. We will also have a Peninsula exhibition area which will become a satellite sales centre.

Planning approval has been submitted with a view to having the build completed in March in time for the start of the gardening season.



Next year will be Peninsula's 35th birthday so we're looking at organising a Summer Party to celebrate.

If you want to know more or more importantly make sure you're on the invite list follow us on Facebook, Twitter and Instagram where we'll be announcing all the details in a couple of months.



Celebrating 35 years

Installations of the Month

Curved Conservatory

The overall award for installation of the month has to go to the curved conservatory in Bangor.

This is a stunning extension which the owners are delighted with and proves that we can not only meet but surpass our customers' dreams.



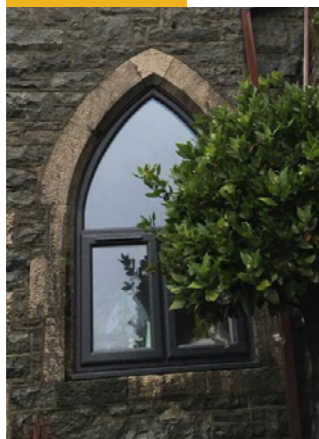
Installations of the Month

A UK First

Acubis in the UK

Next on our list is the very first installation of an SDL Acubis in the UK. This 4m by 3.5m stand-alone structure has been installed in Rhosneigr and we're sure you'll agree that it's spectacular.





Gothic Windows in Pwllheli

Another favourite of ours is this home in Pwllheli where we installed a number of new gothic windows and cladding around the front door.



Upcoming Projects

Min y Don

We're working with Hurstwood Holdings in providing internal and external balustrades on their development of 20 luxury apartments on the banks of the Menai Strait.

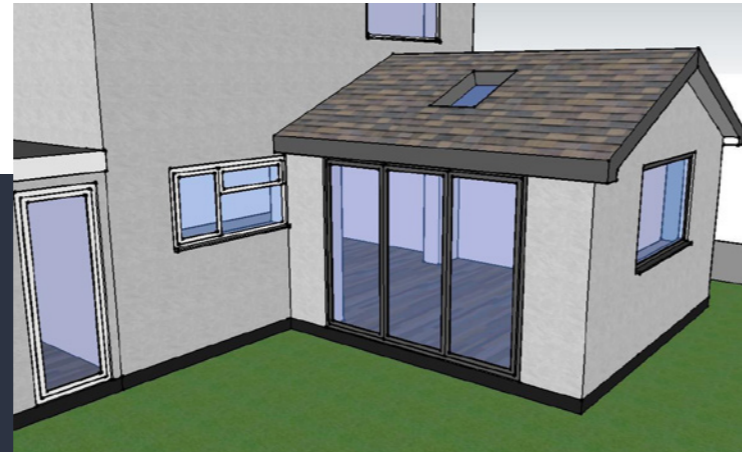
Min Y Don at Water Street in Menai Bridge will be set within secure gated grounds boasting fantastic sea views. Each apartment has been designed to the highest specification and we're delighted to be involved on such a prestigious development.



Cheshire

We've a number of installations underway in Cheshire at the moment including these:

New extension with roof lantern in Northwich (Below)



And this new extension in Kinnerton (Above)



New modern flush sash windows in Hale Barns (Above)



New Product

If you love the look of wood but want the practicality of aluminium then Solarlux's new Timber slider is for you.

It's a two-track tilt and slide system that comes with a flush floor track as well as an approved bottom running tilt and slide running gear. We've one on display in our showroom so why not pop in and have a look.

John Marsh - Storeman

John Marsh joined us as Storeman in September. His first job was the unenviable role of stocktaking and since then he has sorted the massive store out and put systems in place so it now runs like clockwork.

Steve Jones - Installer

Steve Jones has joined us as an installer and if you've ever been to The Bull in Llanerchymedd you might have spotted him spinning a few discs as he often does a turn when they need a DJ!

Marquis Holland - Installer

Another born and bred Anglesonian is Marquis Holland from Benllech who joined us as an installer in October. A qualified carpenter, Marquis had his own joinery business and we're delighted to have him on the team.

Sian Roberts - Marketing

Sian Roberts started work with Peninsula at the end of October and is our newest member of the Marketing Team - you may well get a call from Sian updating you on all our latest offers, Loyalty Cards, Events and much more. In her spare time, Sian is a little bit of a self-confessed Petrol Head - so when she isn't racing around the island you can find her socialising with friends and family or cooking up a treat for her young lad. Sian is now with us five days a week and we look forward to her becoming a great ambassador for Peninsula.

Staff News



John Marsh



Marquis Holland



Steve Jones



Sian Roberts

Sponsorship

We are committed to playing an active role in the local community and as such invest heavily in and support groups through sponsorship and charitable donations. Here's a round-up of our recent support:

Pen Llyn Ultra

We were very proud to have been an active instigator and supporter of the first Pen Llyn Ultra which took place in November.

This new 35-mile marathon was the brainchild of our CEO Ken Grayson along with five of his former school pals who run Harlech Foodservice, The Coconut Kitchen, Chilli Penguin Stoves, Tyddyn Sachau Nurseries and Huw Williams, founder of the Llamwyr Llyn running club. Peninsula also sponsored a race within the race, The Peninsula Mile, which was the hardest section of all. Ken said; "We wanted to get involved because it puts our home turf of the Llyn Peninsula on the map. An event like this stands for endurance and resilience, traits I feel my company has demonstrated over the years."

Huge congratulations to Huw Brassington on being the first man, to Lizzie Richardson for being the first woman and to Lowri Morgan on her fantastic time, as well as to everyone who took part.



Llanddaniel Fab Community Project

We were delighted to be in the position to help out Llanddaniel Fab's Community Project, Yr Efail, with new windows and door which have now been fitted.

The village shop is not only a shop but also a Post Office and is vital to the lifeblood of this community.



**Call now on
01248 715 555**
or visit our
showroom

Star Crossroads, Gaerwen,
Anglesey, LL60 6AL